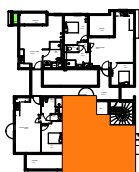
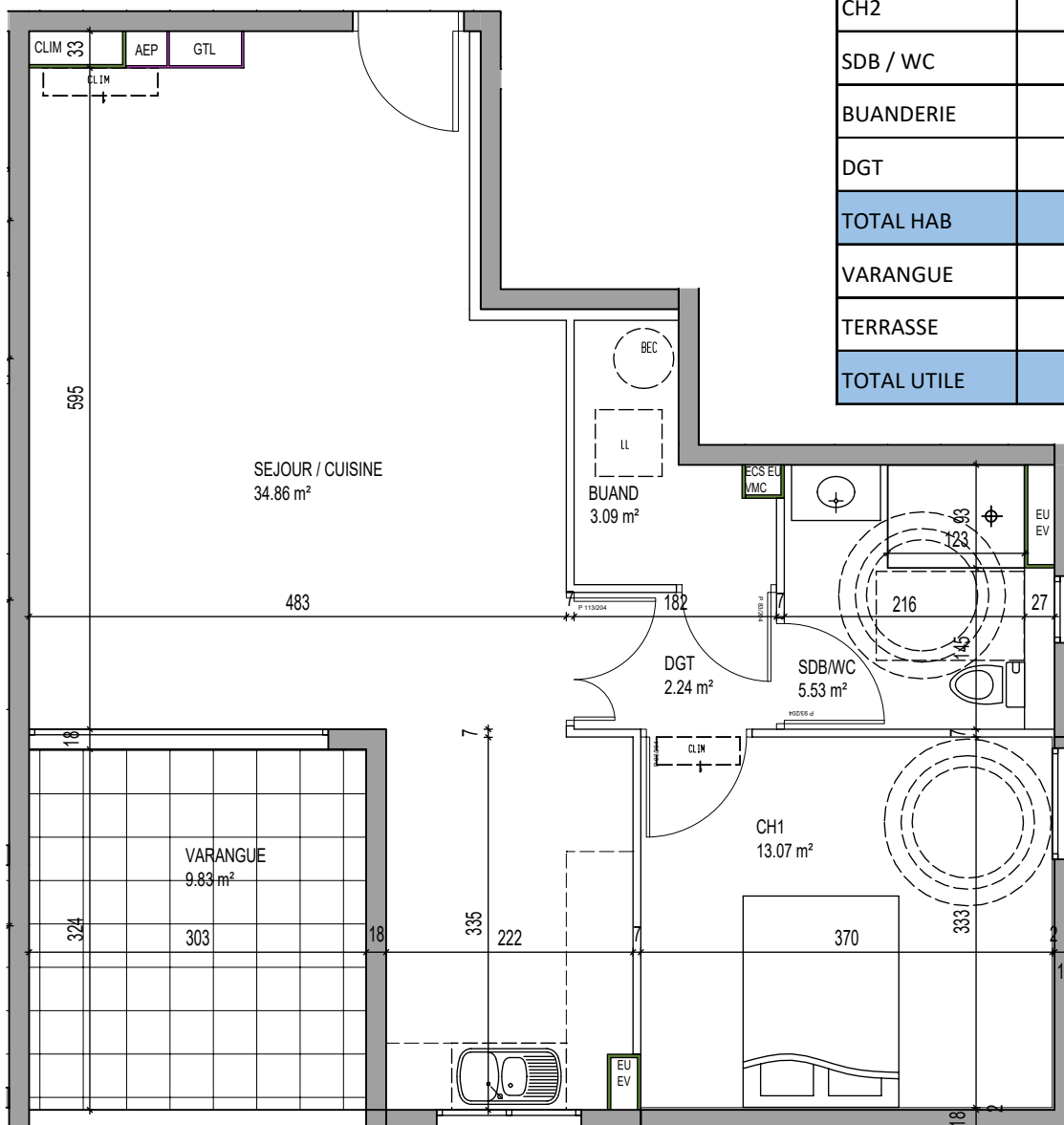


Résidence "MAMZ'ELLE PAULA"

Une réalisation
SCCV
Mamz'elle Paula

| Désignation | Surface |
|--------------------|--------------|
| SEJOUR / CUI | 34,86 |
| CH1 | 13,07 |
| CH2 | |
| SDB / WC | 2,24 |
| BUANDERIE | 3,09 |
| DGT | 2,45 |
| TOTAL HAB | 55,71 |
| VARANGUE | 9,83 |
| TERRASSE | |
| TOTAL UTILE | 65,54 |



Niveau R+4

T2

18